



WINDOWS | ROLLER SHUTTER | DOORS | GARAGE DOORS



INSPIRE YOURSELF....



CHALET STYLE
PAGE 32



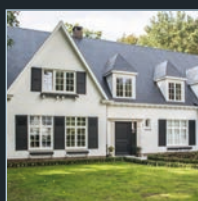
SCANDINAVIAN STYLE
PAGE 44



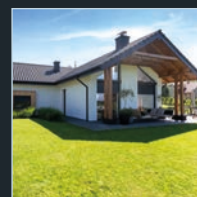
MODERN STYLE
PAGE 38



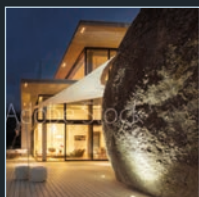
MEDITERRANEAN STYLE
PAGE 20



CLASSICAL STYLE
PAGE 8



MINIMALISTIC STYLE
PAGE 14



FUTURISTIC STYLE
PAGE 4



RUSTICAL STYLE
PAGE 22



“...do it
**YOUR OWN
WAY**”

ABOUT COMPANY PAGE 50

Innovative and spectacular glazings that is the leading motive of the ultra- modern style, referring to the blurring of the boundary between the interior of the building and its surroundings. Minimalistic, natural interiors which are

FUTURISTIC STYLE



characterized by a prestigious design, where natural light and space play the main role.

location:

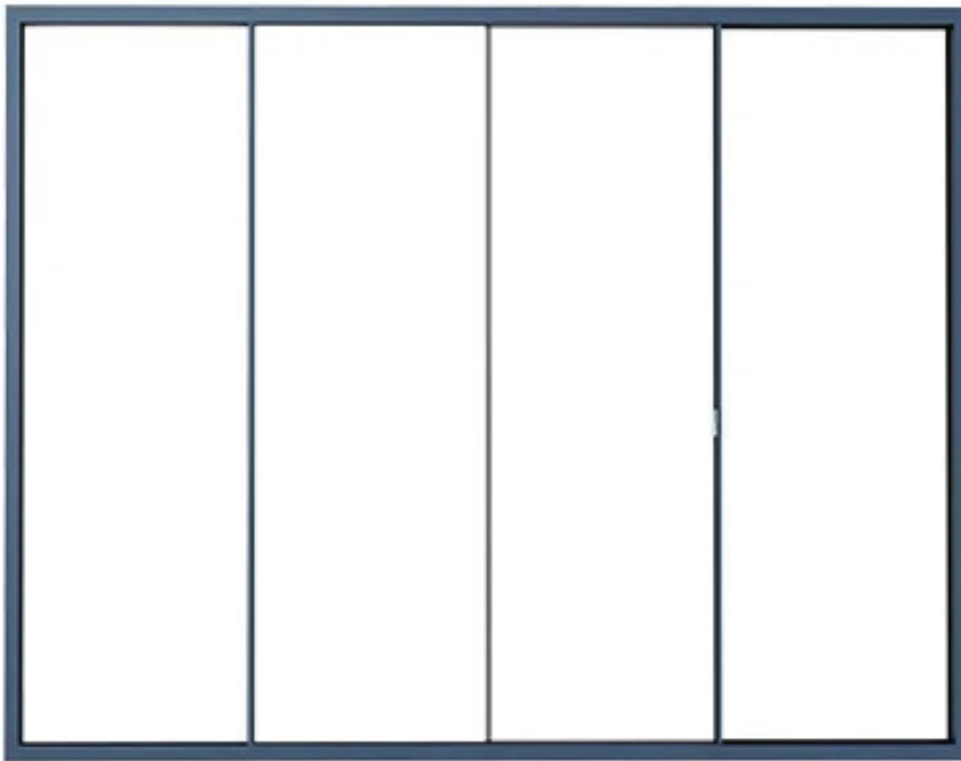
GERMANY





A CLOSER-LOOK





U-factor= 0,15*

Extensive dimensions with width up to $472 \frac{7}{16}$ inches and a height up to $157 \frac{3}{64}$ inches

SLIDING DOOR DA-SKYLINE | ALUMINUM

Unlimited panoramic views

- Innovative solution when it comes to the hidden frame
- Possibility of constructing large-size glazings
- Maximum amount of natural light

FUTURISTIC

The timeless aesthetics and the usage of proven solutions that combine comfort, elegance and good taste. Due to the soft colors and finely balanced design, the buildings created in this style grew in popularity among investors.

CLASSICAL STYLE



location:
BELGIUM





A CLOSER-LOOK





CLASSICAL



PRODUCTS USED IN THE PROJECT

U-factor= 0,21*
Profile thickness:
2 11/16 in



EXTERNALLY APPLIED GRIDS

WINDOW DDF-68

| WOOD

NATURAL BEAUTY IN RICH STANDARD

- Slim, plain profile
- External grid typical for this style
- Very good thermal insulation

Installation depth:
2 11/16, 2 1/16 or 3 5/8 in



FRAME-PANEL DOOR

| WOOD

MODEL: VERO

- Prestigious product of highest class
- Wide range of colors, decorative elements, optional colors equipment
- High thermal insulation and water resistance confirmed by laboratory tests



SECTIONAL GARAGE DOOR

DK-GP THERMO

- Smooth, modern panel, available in colors compliant with those of the garage doors, entrance doors and windows
- High quality when it comes to working and control
- Reduced heat permeability that facilitates thermal insulation of the house

U-factor= 0.14* Btu/h·ft²
Profile thickness:
3 1/32 in



WINDOW DA-77US | ALUMINUM

WARM SYSTEM WITH THE HIDDEN SASH OPTION

- Unique aesthetics
- Modern appearance of aluminum in a simple form
- Excellent thermal insulation parameters



CLASSICAL

Modern buildings are characterised by simple, geometrical forms, large glazed surfaces as well as the blend of natural materials. As important as the building's design is paying attention to the issues

MINIMALISTIC STYLE



concerning the energy efficiency and ecology of used materials.

location:
POLAND





A CLOSER-LOOK





LESS IS MORE



PRODUCTS USED IN THE PROJECT



ENTRY DOOR | DA-77N
MODEL: TIRANO

ALUMINUM DOOR WITH ATTACHMENT PANEL

- Prestigious product
- Modern, minimalistic design with eye-catching side fanlight
- Pleasant to touch, visually striking grip made of natural wood

Color: grey anthracite - glamorous, modern, perfect for the contemporary architecture



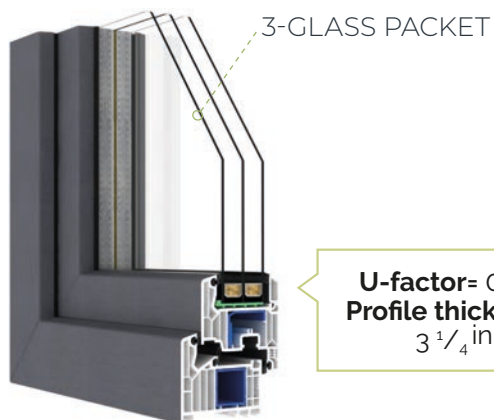
ROLLER SHUTTER | DK-RSP

WITH ALUMINUM CURTAIN

- Protection against cold, wind and sun
- Intimate effect
- Colors compliant with those of windows, entrance doors, and garage doors



ZOOM



3-GLASS PACKET

U-factor= 0.12*
Profile thickness
3 1/4 in

WINDOW DPQ-82 | Vinyl

WARM DIMENSION OF INNOVATION

- Excellent thermal insulation providing warmth inside
- Plain form, heavily rounded profiles free from clearly marked, sharp edges
- Invisible hinges enriching products' aesthetics

WINDOW HST | Vinyl

THE MOST IMPORTANT ADVANTAGES

- Prestigious large glazed surfaces
- Effortless opening and closing
- Low threshold facilitating comfort when moving



LOW
THRESHOLD

- max. weight of sash: **250 kg**
- max. height of door: **98 7/16 in**
- max. width of door: **216 9/16 in**
- max. surface of sash: **10075 in²**

*glass: 4/18/4/18/4 | gas: argon
warm spacer | size: 48 4/9 in x 58 1/4 in

LESS IS MORE

MEDITERRANEAN STYLE

This type of architecture is typical for Southern Europe, where the white elevations beautifully contrast with the colors of the lush vegetation and the crystal blue sea.



location:
ITALY





A CLOSER-LOOK



© Matteo Noldi - 2016



MEDITERRANEAN



PRODUCTS USED IN THE PROJECT

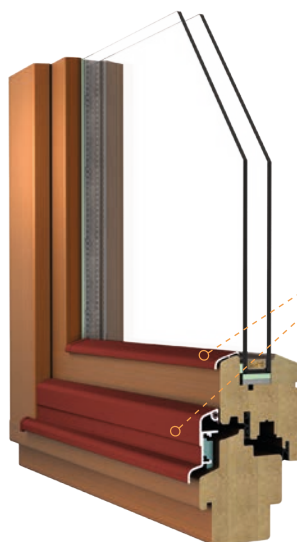


DESIGNER HANDLE
MODEL 1033

WINDOW DDF-68 | WOOD

NATURAL BEAUTY IN RICH STANDARD

- Slim, plain profile of clearly marked edges
- Beauty of wood enhanced by classic staining
- Very good thermal insulation



ZOOM

DRIP CAP AND LIST AS
A PROTECTION AGAINST
WEATHER CONDITIONS

U-factor= 0,21*
Profile thickness:
2 11/16 in



U-factor= 0,21*
 Profile
 thickness:
**2 ¹¹/₁₆, 3 ¹/₁₆
 or 3 ⁵/₈ in**

WINDOW **HST** | **WOOD**

PRESTIGIOUS COMBINATION OF LARGE GLAZING AND NATURAL WOOD

- Glamorous, large glazed surface
- Effortless opening and closing
- Low threshold facilitating comfort when moving



HANDLE FOR HST - **SHELL HANDLE**

AVAILABLE COLORS



white
(RAL 9016)



brown
(8019)



silver
(F1)



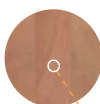
old gold
(F4)



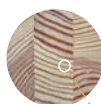
titanium
(F9)

GET FAMILIAR **WITH OUR WOOD**

CHOOSE THE WOOD TYPE PROPER FOR YOUR NEEDS



meranti



pine



larch

RUSTICAL STYLE

Rustic style derives an inspiration from the rural traditions. Its characteristic features are, among others, the natural materials: stone or wooden floor, plain decorative elements and details made of wrought iron. Currently, the newly emerging projects are an inspiring link



between tradition and modern solutions. Also, the brickly walls and plain roof tile are typical for this style.

location:
BELGIUM





A CLOSER-LOOK





TRADITIONAL



PRODUCTS USED IN THE PROJECT

P-10 GRIP



DOOR | DA-90N

MODEL: ELIGIA

- Prestigious model of highest class
- Plain, modern design with subtle millings
- Cutting-edge technology guaranteeing very good thermal insulation and functionality



ROLLER SHUTTER

DK-RZO | DK-RZP

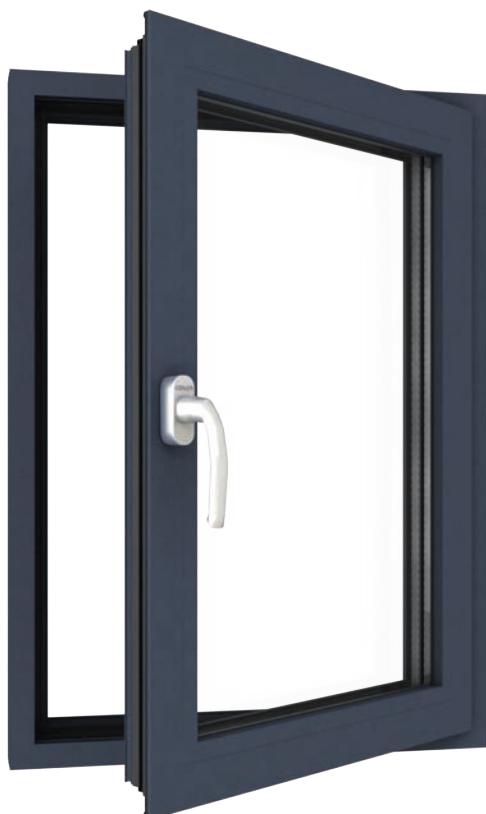
- Protection against cold, wind and sun, as well as an intimate effect
- Roller shutter box flush aligned with elevation
- Possibility of installation in already existing buildings

ST SLIDING PATIO DOORS DA-51 HST | ALUMINUM

- better lighting of the interior due to the narrow compounds of sash and frame
- comfortable opening and closing
- light, clean and proven solution



- max. weight of sash: **200 kg**
- max. height of door: **2600 mm**
- max. width of door: **2600 mm**



WINDOW DA-90 THERMO ALUMINUM

- modern appearance of aluminum in a plain form
- wide choice of colors and varnish effects
- perfect balance between quality and price

U-factor= 0,14*
Profile thickness: **3 35/64 in**

TRADITIONAL

Inspired by the Alpine, mountain cottages. The charm and beauty of the Alpine nature is reflected in the interiors' design - rustic furniture, wooden elements and natural colors. The houses created in this style very often have the finishing elements

CHALET STYLE



made of stone which create a perfect match with the natural wood and the warmth of candles and fireplace.

location:

FRANCE, the Alps





A CLOSER-LOOK





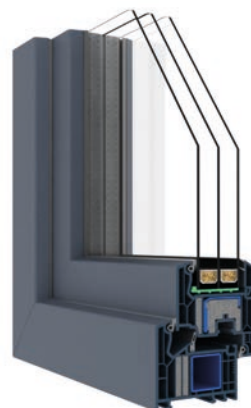
WINTER AREAS



PRODUCTS USED IN THE PROJECT



U-factor = 0.12
Profile thickness:
3 1/4 in



WINDOW DPQ-82 ThermoSecure | Vinyl

REVOLUTIONARY COMBINATION OF WARMTH
AND SECURITY

- Increased security due to the unique, additional locking catches
- Maximal thermal insulation due to the thermal inserts in profile
- Modern appearance



PAS DPQ-82 | Vinyl

HOIST-PATIO DOOR

- Safe ventilation due to an increased anti-burglary protection
- Sash does not move under the wind pressure during ventilation
- Light and quiet opening and closing

MODEL: **SALWIA**



DECORATIVE STONE **GREEN PEARL**

DOOR WITH DECORATIVE STONE | **DA-90N** **ALUMINUM**

- Prestigious product in original design
- Decorative element of natural stone ideally matching grey colors and wood
- Very good tightness and thermal insulation

WINTER AREAS

Modern house is the one that reflects the latest design trends. This style is not based on the particular construction, materials or colors. It is characterised by the usage of the explicit but elegant forms, great amount of glass and complete simplicity.

MODERN STYLE



A house created in the modern style combines the elegant design and functional elements.

location:
FRANCE





A CLOSER-LOOK





FRESH INNOVATION



PRODUCTS USED IN THE PROJECT



U-factor= 0,21*

Profile thickness: 3 1/35 in



ENTRY DOOR DA-77N

MODEL: ALBA

- Prestigious product of highest class
- Elegant design combining dark colors with glamorous gloss
- Cutting-edge technology guaranteeing very good thermal insulation and functionality

WINDOW DA-77 | ALUMINUM



- Modern appearance of aluminum in a clean form
- Eye-catching, deep color
- perfect balance between quality and price
- **The system is also available as a corner option**

somfy®





SLIDING ST DOOR [DA-77 HST](#) | **ALUMINUM**

- Deep range of colors matching windows, doors and garage doors
- Simple, light and proven solution
- Thermal insulation adjusted to the locations of lower thermal requirements



GARAGE DOORS | [DK-GP](#)

- Design and decorative elements harmoniously matched with doors
- Deep color consistent with other products' colors
- Functional and reliable solution

FRESH INNOVATION

There are few main features typical for the Scandinavian style - functionality, simplicity and the usage of the natural materials. It is important to optically enlarge the interiors - this can be achieved due to the minimal design and bright colors.

SCANDINAVIAN STYLE



Apart from the most popular white shade, the designers very often opt for grey, beige and blue tones.

location:
SWEDEN





A CLOSER-LOOK





NORTHERN VIBE



PRODUCTS USED IN THE PROJECT

DPP-70 SLIM LINE



White color - one of the distinctive features of the Scandinavian style



NARROW PROFILE, MORE LIGHT!

DPP-70 WS



WINDOW SlimLine | Vinyl

A POPULAR SOLUTION ON DIFFERENT MARKETS

- Classic, simple design in line with Scandinavian with modern trends
- Aesthetic solution of a narrower frame and sash for more light
- Very good level of thermal insulation



BALCONY DOOR | Vinyl

BALCONY DOOR

- Clean design
- Rich standard of equipment
- Good thermal insulation



ZOOM

HANDLES | Aluminum



1006
white

1006
silver

Typical for the
Scandinavian style

NORTHERN VIBE

DAKO is a Polish company with traditions, established by two brothers – Jerzy and Janusz Studziński in 1994. For 30 years the company has been developing on the global market offering its clients the comprehensive range of products including the windows and doors made of vinyl, wood and aluminum as well as the roller shutters and garage doors supported by the smart home management systems.



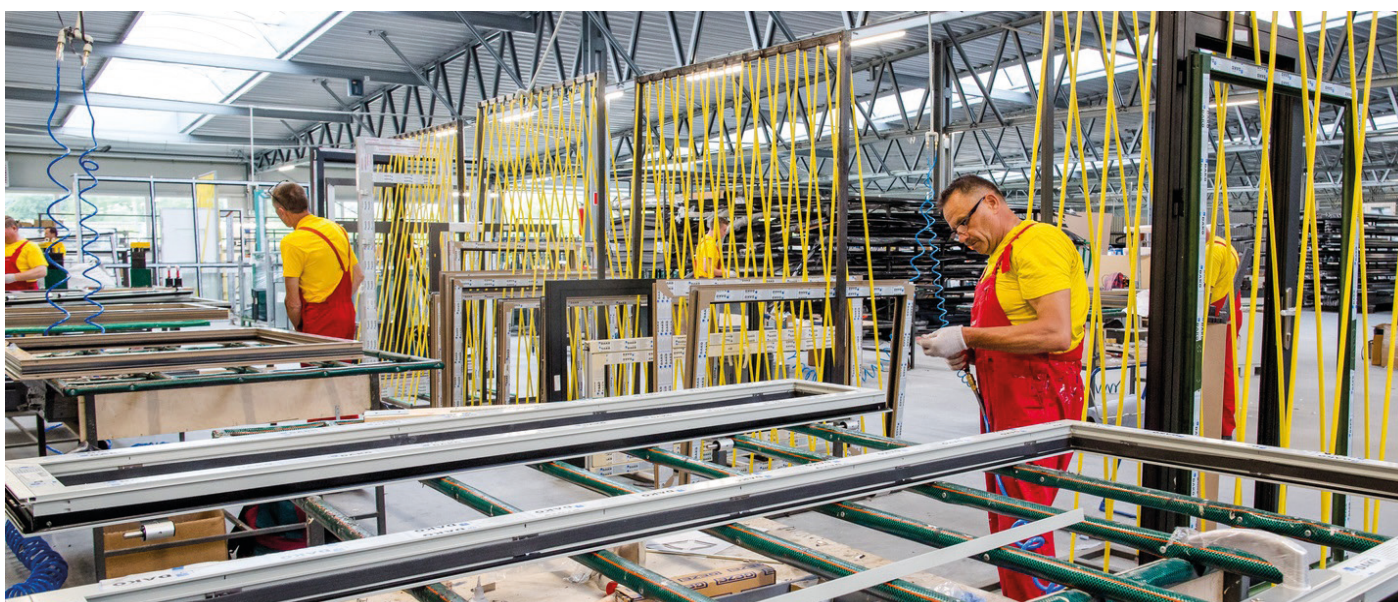
JANUSZ STUDZIŃSKI
| VICE-CHAIRMAN



JERZY STUDZIŃSKI
| CHAIRMAN OF THE BOARD


FAMILY BUSINESS

since 1994



OUR STORY

CERTIFICATIONS



NATIONAL CERTIFIED TESTING LABORATORIES

FIVE LEIGH DRIVE • YORK, PENNSYLVANIA 17406 • TELEPHONE (717) 846-1200
FAX (717) 767-4100
www.nctlinc.com

AAMA/WDMA/CSA 101/I.S.2/A440-11
CSA A440S1-17

TEST REPORT SUMMARY

Rendered to:
DAKO SP. Z O.O.
33-300 Nowy Sącz,
Al. Piłsudskiego 88


PRODUCT TYPE: Type OX Sliding Glass Door
SERIES/ MODEL: "MB77HS HI AS"

Title	Summary of Results
Primary Product Designator AAMA/WDMA/CSA 101/I.S.2/A440-11	Class AW-PG50: Size tested 4064 x 2540 mm (~160 x 100 in) - Type SD
Positive Design Pressure	2400 Pa (50.13 psf)
Negative Design Pressure	2400 Pa (50.13 psf)
Operating Force (in motion _{max})	98 N (22 lbf) Prior to Cycles 107 N (24 lbf) After Cycles
Air Infiltration	0.2 L/s/m² (0.3 cfm/ft²) Prior to Cycles 0.3 L/s/m² (0.05 cfm/ft²) After Cycles 0.9 L/s/m² (0.16 cfm/ft²) After Design Load
Canadian Air Infiltration/Exfiltration	A3 Level
Water Penetration Resistance Test Pressure	480 Pa (10.03 psf) Prior to and After Cycles and Design Load
Uniform Load Structural Test Pressure	3600 Pa (75.19 psf)
Forced Entry Resistance	ASTM F842-04 - Grade 10 Pass

Test Completed: 10/29/19

Reference must be made to Report No. NCTL-110-23685-1 dated 09/25/20 for complete test specimen description and data.

For National Certified Testing Laboratories



DIGITAL SIGNATURE

Jay Leader
Technician

Professionals in the Science of Testing

Page 1 of 22



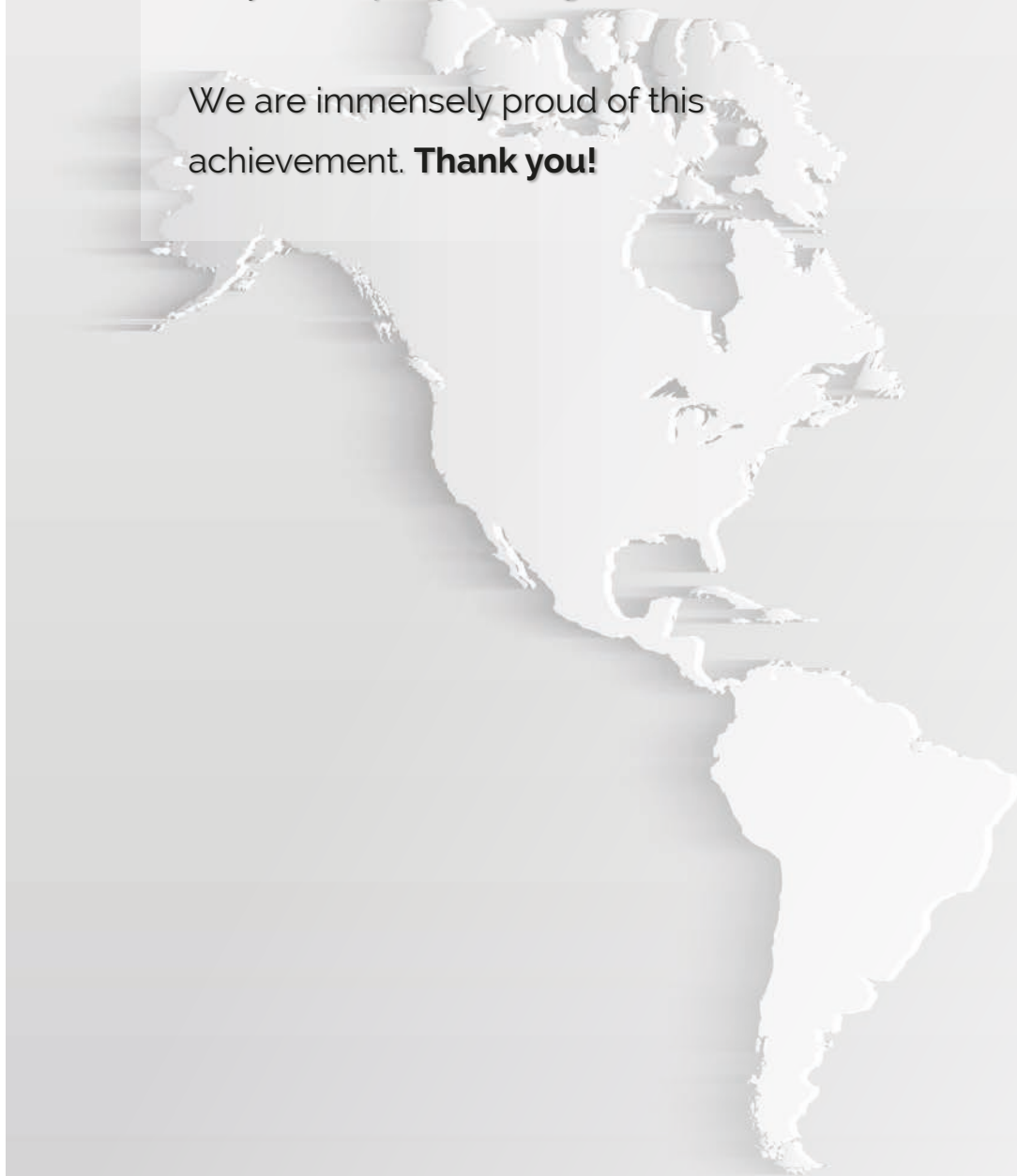




INTERNATIONAL SCOPE

It is a great honor that **since 1994 DAKO** products have been a part of the homes worldwide, playing a significant role in the daily life of people living there.

We are immensely proud of this achievement. **Thank you!**





+70% production

exported to the foreign markets

WINDOWS

ROLER BLINDS

DOORS

GARAGE DOORS

VINYL | WOOD | ALUMINUM

DAKO

Piłsudskiego 88

33-300 Nowy Sącz **POLAND**